

### Message from Mrs Ward

Hello and welcome to my second Spring Newsletter!

Currently in Early Years we have a growing collection of unnamed lost property. Please ensure that all items of clothing are named and if you are missing anything please speak to a member of the Early Year's team who will be willing to help.

### Safeguarding

Our Designated Safeguarding Team consists of Miss Kelly, Mrs Kendall and Mrs Hemingway. Our Mental Health Lead is Miss Bottom. If you have any concerns about a child or family, please speak to one of these staff members. They can be contacted via the main school office on 01924 242917 or by email, to [headteacher@daneroyd.wakefield.sch.uk](mailto:headteacher@daneroyd.wakefield.sch.uk) (Please mark FAO: DSL/Safeguarding Concern).

### Spring 2 - Dates For Your Diary

- Fair Trade Fortnight: Week's 1 & 2
- Pancake Day: Tues 1st Mar 22
- Virtual Author Visit: Wed 2nd Mar 22
- World Book Day: Thurs 3rd Mar 22
- International Women's Day: Tues 8th Mar 22
- PTA Mother's Day Event: Fri 11th Mar 22
- British Science Week: Week 3
- Tempest Class Photos: Thurs 17th Mar 22
- Comic Relief: Fri 18th Mar 22
- Easter Egg Competition: Wed 6th Apr 22
- Parent Consultation Evening/s: Wed 6th & Thurs 7th Apr 22

### Evidence Me by 2Simple

Here at Dane Royd we strive to create a strong partnership between staff in school and families at home. We want to develop a detailed and unique picture of your child. To facilitate this, we use Evidence Me by 2Simple, to create a two-way flow of communication. If you haven't already done so then please download this free app today. Please ask a member of Early Year's staff for assistance or online help is also available via the link provided.

<http://help.evidence.me/evidence-me-help-for-parents>



### 50 Things To Do Before You Are 5

Here at Dane Royd we are 50 Things Champions! 50 Things aligns with the Department for Education's pre-school literacy priorities. Each half term we will signpost activities for you to do at home that not only support your child's learning in school and boosts their early language development but are also great fun for the whole family and usually completely free of charge!



## Useful Links

Please remember to follow your child's class Twitter and dedicated pages on the school website as these are regularly updated with important information.

	Twitter	Website
Wraparound	@DaneRoydWrap	<a href="https://www.daneroyd.com/wraparound-care">https://www.daneroyd.com/wraparound-care</a>
Nursery	@DaneRoydNursery	<a href="https://www.daneroyd.com/nursery">https://www.daneroyd.com/nursery</a>
Reception	@DaneRoydUFS	Sunshine - <a href="https://www.daneroyd.com/ufs-sunshine">https://www.daneroyd.com/ufs-sunshine</a> Rainbow - <a href="https://www.daneroyd.com/ufs-rainbow">https://www.daneroyd.com/ufs-rainbow</a>
Early Years		<a href="https://www.daneroyd.com/eyfs">https://www.daneroyd.com/eyfs</a>
Dane Royd	@DaneRoydSchool	<a href="https://www.daneroyd.com/">https://www.daneroyd.com/</a>
PTA	@PTAdaneroyd	<a href="https://www.daneroyd.com/pta">https://www.daneroyd.com/pta</a>

If you are unable to find the information you are looking for please do not hesitate to contact me via the main school office on 01924 242917 or by email, [EYFSlead@daneroyd.com](mailto:EYFSlead@daneroyd.com) with any comments or queries you may have.

## Attendance Matters in Early Years



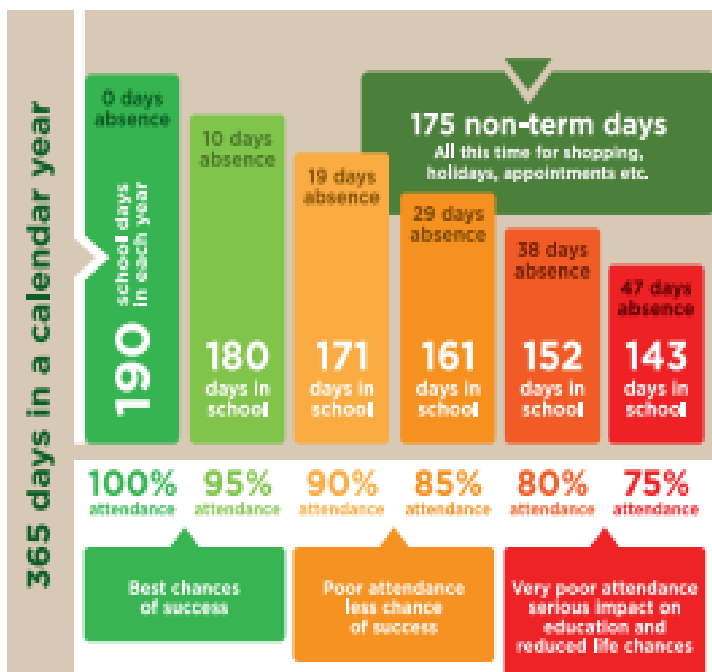
DANE ROYD  
SCHOOL

**EVERY CHILD, EVERY DAY**

**Morning Nursery are currently at 86% attendance**

**Afternoon Nursery and Upper Foundation are both at 92% attendance**

**Good attendance at Dane Royd means...**  
*...being in school at least 95% of the time  
(180 - 190 days a year)*



**Good timekeeping at Dane Royd means...**  
*...being in school on time, every day, ready to learn!*

