



Welcome to Dane Royd J & I

Nursery
Transition Meeting 23/24

Headteacher: Miss Kelly

Meet the team:



Miss Mortimer



Mrs Batley



Mrs Waite



Miss Lodge

Our setting:



Children will have access to 1 indoor classroom plus our Nursery outside area.

Timetable & routines:



Session Times:

- **Morning 8.45am - 11.45am**
- **Afternoon 12.15pm - 3.15pm**

We kindly ask that you closely supervise your child during these handover times. Our outdoor environment is considered an extension of our classroom; toys & equipment **should not** be used whilst waiting for the doors to open.

Wraparound

We are also able to offer wraparound care which takes place within the school environment for parents who need longer childcare provision.

It will complement existing provision at the Nursery and is available through payment of a fee. If you are interested in Wraparound, please speak to Extended Schools Manager, Mrs Beddard, about times available and cost or visit the school website for further details: <https://www.daneroyd.com/wraparound-care>



Typical daily structure:

- Children say goodbye to parents outside on the Nursery playground.
- Children enter through the red doors.
- Hang coats in cloakroom.
- Find photo/name for self-registration.
- Self-directed choosing time (indoor).
- 10 mins focused session on the carpet.
- Read Write Inc Phonics session
- Self-directed choosing time (indoor/outdoor)
- 10 mins focused session on the carpet.
- Snack time
- Self-directed choosing time (indoor/outdoor)
- Story and home.



Nursery Timetable							Autumn Term	
	8:45 - 9:00 12:15 - 12:30 15mins	9:00 - 9:10 12:30 - 12:40 10mins	9:10 - 9:20 12:40 - 12:50 10mins	9:20 - 10:20 12:50 - 1:50 1 hour	10:20 - 10:30 1:50 - 2:00 10mins	10:30 - 10:45 2:00 - 2:15 15mins	10:45 - 11:30 2:15 - 3:00 45mins	11:30 - 11:40 3:00 - 3:10 10mins
MONDAY	Register / Busy Activity	Maths	RW: Story Time	Provision	Topic	Milk & Fruit	Provision	Story & Song
TUESDAY	Register / Busy Activity	Maths	RW: Story Time	Provision	Topic	Milk & Fruit	Provision	Story & Song
WEDNESDAY	Register / Busy Activity	Maths	RW: Story Time	Provision	Topic	Milk & Fruit	Provision	Story & Song
THURSDAY	Register / Busy Activity	Maths	RW: Story Time	Provision	Topic	Milk & Fruit	Provision	Story & Song
FRIDAY	Register / Busy Activity	Maths	RW: Story Time	Provision	Topic	Milk & Fruit	Provision	Story & Song

Key Information:

Safeguarding

- Please let us know if someone other than yourself will be collecting your child from Nursery. We will not allow anyone other than the parents to take your child unless previously agreed. Please inform the school of any legal access arrangements.
- Please ring the school office as soon as possible if you are unable to pick up your child at the allotted time due to an unforeseen circumstance and we will ensure that they are kept safe until your arrival.
- **For the safety of all children at Dane Royd we ask parents to shut the green school gate after entering the premises.**
- To gain access to Nursery please press the appropriate button on the telecom. At drop-off & collection please wait for the gate to be buzzed open by the Nursery team, this will happen at an appropriate time regulated by staff.
- Please inform the school office when your child is going to be absent for an appointment or if you have organised a holiday during term time.
- All policies are available for you to view on the school website. Paper copies can be made upon request at the office.

Safety & welfare: (...continued)



- Parents/carers must **NOT** use cameras and mobile telephones on the premises.
- Please do **NOT** bring toys from home into school. Keep them at home where they are safe!



- **NO** dogs are allowed on the school site.
- Please do **NOT** bring your child to school if they are ill. We appreciate that this may bring some difficulties with childcare however if the child is not very well they will not be fully fit to learn and may pass on their illness to others.



- We are a '**no-smoking**' school and ask that cigarettes are extinguished before entering the school premises.

Useful Information

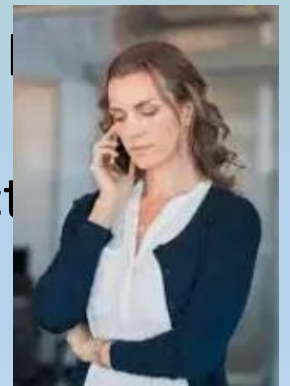
Absence & Illness



- Please make sure you **keep us informed of any medical conditions/allergies** your child may have.
- If your child requires medication during the Nursery session, we have a consent form that must be filled in.

Please do not bring your child to Nursery if they are ill.

- If your child is not very well, they will not be fully fit to learn and may spread their illness to others.
- Exclusion times for common illness are included at the back of the prospectus.
- Please ring school before 9.30am to inform us of sickness absence.



Useful Information:

Before & After-school provision



- We have provision on site for before and after school care for children of working parents.
- Open from 7:30am – 6:00pm
- Hot breakfast is provided in the morning and children staying until later in the day may bring a pack-up to eat in the afternoon session.
- Run by trained school staff and provides a wealth of activities to keep the children entertained.
- Please speak to Extended Schools Manager, Mrs Beddard, to discuss your requirements and rates or visit the school website for further details:
<https://www.daneroyd.com/extended-schools>

Useful Information:

Uniform



All children are required to wear school uniform.

- **grey trousers, shorts, culottes, pinafore or skirt**
- **white polo-shirt**
- **bottle green jumper or cardigan.**
- **green and white checked summer dress can also be worn in warmer months.**

Children should wear **black school shoes** and velcro fastenings are advised. Girls should not wear dainty slip-on footwear, shoes must have ankle straps for safety purposes.

Please label all uniform, bags and shoes clearly.



Useful Information:



Appropriate outdoor wear



- Since we utilise our outdoor area all year round, we ask that warm coats are provided in cold weather along with hats, scarfs and gloves.
- Wellies are required that will stay in school.
- During summer months, please apply sun-cream to your child in the morning/afternoon before they arrive at school.
- This can be topped up during the day if the child can apply it themselves, and only from a named bottle of sun-cream that you supply.
- Please also send your child with a sun hat if the sun is shining.

Please clearly label all items of clothing!



Self-help skills:

Dressing



In Nursery we strive to build independence and encourage the children to put on and take off their own coat & shoes where possible. We find that children cope better with Velcro fastenings as opposed to shoelaces/buckles.

Staff will be on hand to assist but we will always encourage children to independently fasten/unfasten buttons and zips where possible. Practicing these skills at home can help support your child with independence.

Toileting



Your child should be clean & dry when they attend their session. It is preferable in nursery that children are able to go to the toilet independently and in doing so; able to deal with their own clothes (elasticated waistbands are recommended), wipe themselves, flush the toilet and wash their hands with minimal assistance.

Occasionally accidents do happen, we are prepared for this and have a supply of spare clothes, which we would ask you to wash and return to class.

Intimate care plans will be put in place for children who need more support with toileting or are in pull-ups, please speak to a member of staff if you feel this is necessary.



Useful Information:

Library



- Every Friday we invite parents to choose a book with their children from our Library service to share at home.
- Each child is given a library bag to keep their book in.
- The book in it's bag should be returned at the start of the following week to be eligible for a new book on Friday.
- If you lose your library bag, a new one can be purchased for £1 and lost library books will be billed.

Every Friday we will open early for our morning Nursery children at 11:30am so you have time to select a book together.

Afternoon children will select their book at the start of the afternoon session.

Milk & Snack:

As part of a national School Fruit & Vegetable scheme, all children in Nursery are entitled to receive one free piece of fruit/vegetable each day. Please note, we are provided with seasonal produce and at least 2 options for the children to select from. We respectfully ask that you do not send your own snacks into school for your child. It is important that you make the school team aware of any food allergies so that we can ensure the safety of all children.



Please ensure that your child brings a named water bottle from home each day that is only filled with plain water.



Lunchtime: (only Wraparound children)

For those who are using our Wraparound facility, lunchtime runs from 11.45am-12.15pm.

These children are taken to and from the hall by their dinner supervisor and are seated amongst their peers at the table. We strongly encourage children to take up the Universal Free School meals however children may bring a packed lunch that meets the healthy eating requirements specified in our policy.



Our meal provider is **Caterlink** and parents are able to view the menus online and pre-select your child's meal option in advance from the comfort of your own home using the their website. Details to follow shortly.

Children requiring a special diet are individually catered for. Please request an dietary form from the office if you think your child may need a special diet.

		SUMMER MENU 2021						
		Monday	Tuesday	Wednesday	Thursday	Friday		
WEEK ONE 19 Apr 10 May 7 Jun 28 Jun 19 Jul	Option 1	Macaroni Cheese with Garlic Slice	Pork Sausages, Mashed Potatoes & Gravy	Roast Chicken with Stuffing, Roast Potatoes & Gravy	Plant Based Chicken Tikka Curry with 50/50 Rice	Fish Fingers/Salmon Fish Fingers with Chips	Added Plant Power	Only Fish
	Option 2	Soya Spaghetti Bolognaise	Vegetarian Sausages, Mashed Potatoes & Gravy	Potato & Courgette Stack with Roast Potatoes	Lentil & Sweet Potato Curry with 50/50 Rice	Wholemeal Cheese & Tomato Quiche with Chips	Vegan	Wholemeal
	Vegetables	Sweet Corn Peas	Carrots Cabbage	Mashed Swede Cauliflower	Broccoli Carrots	Baked Beans Peas		
	Dessert	Marble Sponge with Custard / Fresh Fruit	Peach Upside Down Cake / Fresh Fruit	Pear Crumble & Custard / Fresh Fruit	Apple, Cheese & Crackers / Fresh Fruit	Vanilla Cookie / Fresh Fruit		
WEEK TWO 26 Apr 17 May 14 Jun 5 July	Option 1	Pork Sausage Pasta Bake	Plant Based Mexican Beef Chili with 50/50 Rice	Roast Pork, Roast Potatoes & Gravy	Chicken & Red Pepper Pizza with Wedges	Fish in Batter with Chips	Added Plant Power	Only Fish
	Option 2	Vegetable Hotpot	Tomato & Vegetable Pasta	Quorn Roast Fillet with Roast Potatoes & Gravy	Vegetarian Tortilla Stack with Wedges	Cheese Frittata with Chips		
	Vegetables	Sweet Corn Broccoli	Peas Carrots	Fresh Mixed Vegetables	Sweet Corn Green Beans	Baked Beans Peas		
	Dessert	Mixed Fruit Crumble & Custard / Fresh Fruit	Chocolate Cake with Chocolate Drizzle / Fresh Fruit	Apple & Raisin Flapjack	Pear Upside Down Cake / Fresh Fruit	Orange & Lemon Shortbread / Fresh Fruit		
WEEK THREE 3 May 24 May 21 Jun 12 July	Option 1	Cheese & Tomato French Bread Pizza	Chicken & Sweet Corn Pie with New Potatoes & Gravy	Roast Turkey Fillet, Roast Potatoes & Gravy	Vegetarian Wellington with Roast Potatoes	Broccoli & Cheese Pasta Bake	Added Plant Power	Only Fish
	Option 2	Vegetable Enchiladas	Five Bean Chili with 50/50 Rice	Peas Cauliflower	Green Beans Carrots	Baked Beans Peas		
	Vegetables	Coleslaw Mixed Salad	Sweet Corn Broccoli	Peas Cauliflower	Green Beans Carrots	Baked Beans Peas		
	Dessert	Oaty Cookie / Fresh Fruit	Eve's Pudding & Custard / Fresh Fruit	Peach Crumble & Custard / Fresh Fruit	Chocolate & Mandarin Biscuits / Fresh Fruit	Spanish Cinnamon Cookie / Fresh Fruit		

ALLERGY INFORMATION
If your child has an allergy or intolerance, please ask a member of the catering team for information. If your child has a school lunch and has a food allergy or intolerance, you will be asked to complete a form to ensure we have the necessary information to cater for your child. We use a large variety of ingredients in the preparation of our meals and due to the nature of our kitchen it is not possible to completely remove the risk of cross-contamination.

Sharing Information:

- **We encourage parents to share information with Nursery Staff regarding your child's learning and change in routines or home circumstances.** Feel free to catch a member of the Nursery team at the start of the session for a brief chat; alternatively a meeting can be made with the teacher at a mutually convenient time if you need to discuss something sensitive. The school will report progress to families formally by way of two parent consultation evenings over the course of the year.
- In class we have a **Home-School Link Board** where we ask parents to share some of the learning and achievements the children have accomplished at home. We have templates you can complete to add to the class display or you may simply bring pictures, work or certificates for us to share with the class; examples could include swimming certificates, medals, and pictures of special events or achievements/skills where your child has succeeded.

Communication:

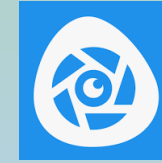
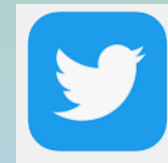
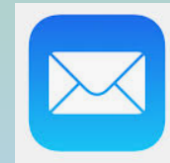
We encourage parents to share information with teaching staff regarding your child's learning and change in routines or home circumstances. We have an 'open-door' approach. Feel free to ask questions and discuss your child at the start of the day should a member of staff be available, alternatively you may request a telephone or face-to-face meeting to be arranged with the teacher at a mutually convenient time.

We believe regular communication is essential in reporting the progress and achievements of children as well as sharing news and important events. For this reason, we have many channels of communication, these include:

- **Email** - EYFSLead@Daneroyd.com
- **Twitter** - @DaneRoydNursery and @DaneRoydSchool
- **Website**

<https://www.daneroyd.com/nursery>

<https://www.daneroyd.com/eyfs>



- **Parentmail** - Half termly curriculum booklets, knowledge organisers and optional homework are sent electronically along with termly Key Stage Newsletters and other relevant information.
- **Evidence Me** - observation-sharing between home and school over the duration of the academic year via Parent Share.

Early Days:

For the first week of Nursery in September, parents and carers may enter the classroom to assist with transition; hanging up coats/bags, self-registration and busying them at an activity. We kindly ask that you have left the building by 8:55am so that we may settle the children for learning.

Please do not hesitate to phone school should you be worried about leaving your child if they are upset; remember, all children are different, but all children do settle and staff are very experienced at building those strong relationships and helping children adjust to Nursery.



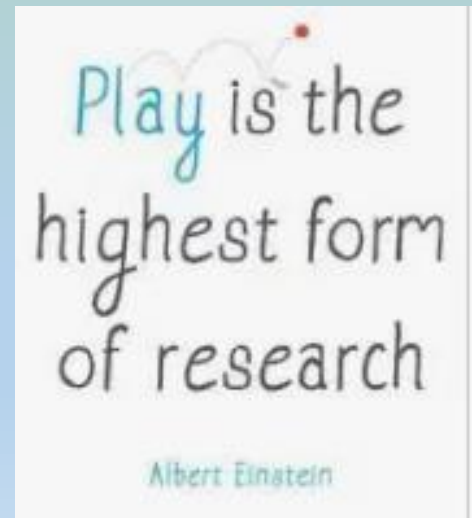
Learning & development:

Provision for children's learning and development is facilitated through a balanced, planned curriculum underpinned by the Department for Education's Statutory Framework for the Early Years Foundation Stage and Development Matters document (Non-Statutory Curriculum Guidance).

The Early Years Foundation Stage is the period of education from birth to 5. It is called a Foundation Stage because the learning involved in the EYFS prepares children for the National Curriculum in Key Stage 1.

During the Early Years Foundation Stage, these areas of learning will be introduced in ways that are suitable for young children, most often through planned, purposeful play. Play is the key to the way children learn. We want all children in Nursery to have enjoyable and satisfying experiences, which will create a solid basis for later learning in school and beyond.

We will provide further insight into learning & development during a Curriculum Meeting in Autumn Term.



Assessment:

- The activities provided in Nursery are carefully planned and resourced to provide experiences which are enjoyable, educational and match the level of development and learning style of each child, we plan themes and topics relating to these each half term.
- Progress made by the Nursery children is evaluated through meaningful interactions with the various adults in play and through observations of the children.
- Through regular 'in the moment' assessment we can respond to each child's individual needs and develop activities to ensure personalised progress.

The Dane Royd Foundation Stage team is using an online platform that allows us to capture photographic evidence to support our assessments throughout the year and at times group work will be observed.

We request your permission for the photographs of group work to be shared in reports that belong to other children within that group. We also ask you, as responsible parents, not to share or distribute any images containing other children. Permission for this was collected in the admissions paperwork.



Useful Information

- We send out curriculum booklets every half-term with useful dates including class assemblies, educational visits and whole school events.
- Homework is sent out each half-term which is optional to complete.
- You can also stay up to date by following our feed on Twitter @DaneRoydNursery.

